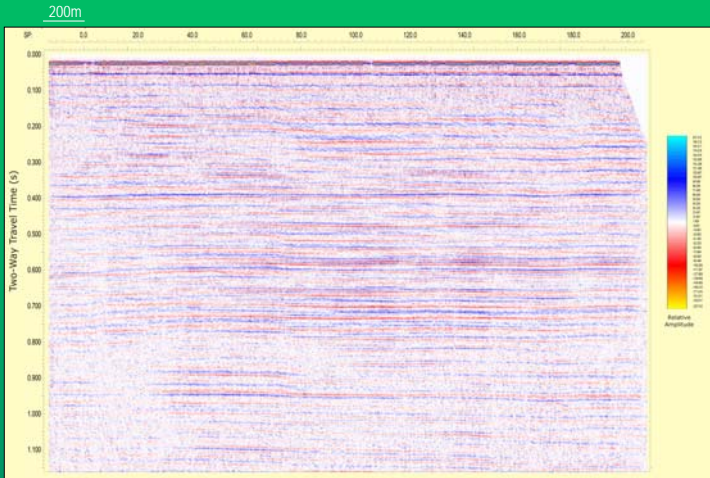


Geometrics 48 Channel GeoEel Digital Streamer System On JW Powell Available For Charter

As part of a collaborative effort to meet an increasing demand for high resolution 2D marine seismic data on geohazard and shallow oil and gas exploration projects, TDI-Brooks International and AOA Geophysics have installed an advanced Geometrics 48 channel GeoEel digital streamer system on the R/V Powell. The GeoEel system is a lightweight fully digital marine seismic streamer system designed for application to a wide range of surveys, including oil and gas exploration, gas hydrates surveys and a variety of special engineering surveys. The JW Powell is currently operating in the west Africa region and is available for charter.



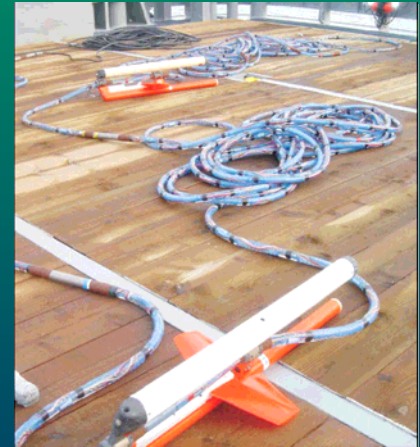
Data acquired from JW Powell using Geometrics 48 channel GeoEel digital streamer system (600 meters active length), and a 60 cu in GI Mini Gun. To achieve a rapid shot repetition rate and uniform gun pressure, the Price W-5 3,000 psi air compressor system was used, operating at 2,250 psi minimum.



In addition to the GeoEel system, the JW Powell is also outfitted with side scan sonar, sub-bottom chirp profiling, magnetometer, and single/multi-beam bathymetry survey gear.

Geometrics GeoEel Digital Marine Streamer/Recorder System

- Sampling Rates: 0.0625, 0.125, 0.250, 0.500, 1, 2, and 4 ms.
- Bandwidth: 1 Hz to 8 kHz
- Programmable Gain: 0, 12, 24, 36, and 42 dB
- Complete built-in testing of streamer and internal electronics.
- Environmentally friendly and non-flammable inert silicone oil.
- Only 38mm, the GeoEel is easy to deploy, easy to transport and can be shipped by air.
- Communicates via fast Ethernet to Geometrics CNT-1 controller.
- Real-time brute stack, near trace gather, noise monitor, multiple storage device options.



Sodera Mini GI Air Gun (Current Source w/ Price Compressor)

- Special wave shape kit allows design of simple and efficient arrays using always the same element.
- Unique design provides broad bandwidth signature with a high degree of stability and a tremendous savings in air consumption.
- Mini GI volumes can be easily adjusted by means of inexpensive plastic inserts.
- Can be operated where generator is 15 cu. in. with injector 30 cu.in. to boost P/B ratio to almost 23 to 1.