

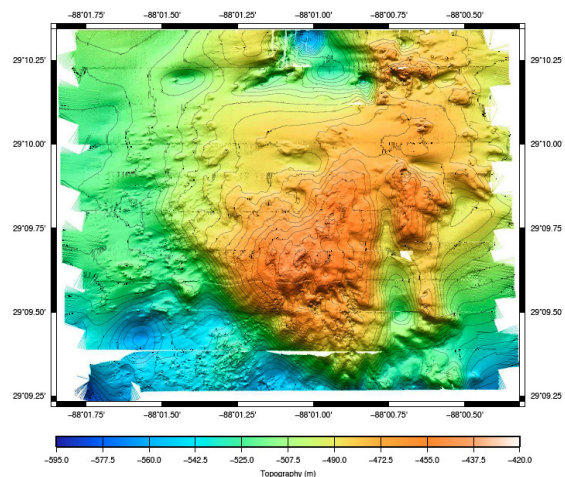


# R/V MISS EMMA MCCALL

The Miss Emma McCall is a multi-purpose vessel well suited for a wide variety of oceanographic research duties. The Miss Emma McCall is operated by TDI-Brooks on a long-term charter and is available for projects throughout North and South America.

The Miss Emma McCall features the following capabilities:

- Geotechnical Coring and Measurements with:
  - Box Core
  - Piston Core (3")
  - Jumbo Piston Core (4")
  - Vibracore
  - Cone Penetrometer
- Coring for Surface Geochemical Exploration (SGE)
- Surface Heatflow Measurements
- Marine Environmental Baseline Surveys (EBS)
- Marine Geophysical Surveys for:
  - Seep Hunting / SGE Programs
  - 2DHR Seismic pre-drill shallow gas hazards
  - Platform and Pipeline Installation
  - Dredging
  - Fiber Optic Cable Route Installations
  - Offshore Wind Farm Installations
  - LNG
  - Academic Research



High-Resolution Bathymetry of Viosca Knoll (VK) 826

Our field services are supplemented by high quality environmental and geotechnical laboratories with a staff of nearly one hundred individuals including fourteen Ph.D. level oceanographers, geochemists, biologists and geologists.

# R/V MISS EMMA MCCALL VESSEL SPECIFICATIONS

Along with oceanographic research, TDI-Brooks International specializes in conducting offshore surface geochemical exploration (SGE) and heat flow programs for the world's leading petroleum producers, and has a large collection of SGE and heat flow program data from around the world available for purchase. TDI-Brooks also has extensive experience in conducting offshore geotechnical coring/engineering programs, environmental assessments, metocean, site surveys and seabed surveys.

The Miss Emma McCall is equipped with satellite communications (voice, fax, and email), differential GPS, geophysical survey gear and large a-frames with high-speed winches for coring or geotechnical work.

## Technical Specifications

### General

Name	R/V Miss Emma McCall
Built	2003
Port/Flag	Cameron, LA - USA
MMSI No.	338100000
Call Sign	WDG8742
IMO No	9289659

### Dimensions

Dimensions (open deck)	95' x 30' (L x W)
Length (overall)	153'
Depth	12'
Deck Cargo	500'
Maximum Cruising Speed	12 knots

### Accommodations

Cabins/Berths	9 staterooms (7x 2-man, 2x 6-man)
Toilets	5 complete heads
Showers	4 showers
Moon Pool	2x 4x4 moon pools, one with 24" valve
Survey Lab	Survey lab with separate power transmitter
Intercom	Video monitor & intercom system throughout

### Capacities

Water	8,900 gal (apx)
Fuel	45,000 gal (apx)
Potable Water	5,400 gal (apx)
Ballast Water	80,000 gal (apx)
Lube Oil	1,300 gal (apx)
Hydraulic Oil	400 gal (apx)
Liquid Mud	50,400 gal (apx-can be converted to fuel or water)

### Machinery

Main engines	2x CAT 3508TA w/twin disk MG6690-OOSC 3.21 ratio
Generators	2x 175kw CAT 3306T @440
Bowthruster	CAT 3406, MARPROP 300hp tunnel



TDI-Brooks International, Inc.  
 14391 South Dowling Road.  
 College Station, TX 77845 - USA  
 Telephone: +1 979 693 3446  
 email: [info@tdi-bi.com](mailto:info@tdi-bi.com)  
[www.tdi-bi.com](http://www.tdi-bi.com)



TDI-Brooks is a privately held Texas firm incorporated in 1996 and headquartered in College Station, TX with remote offices located in Houston, TX and strategically located offices around the globe including Port Harcourt, Nigeria (TDI-Brooks Nigeria Ltd.), Rio de Janeiro, Brazil (GSI-Brooks), Ghana (TDI-Brooks Ghana), Singapore, India and Colombia.