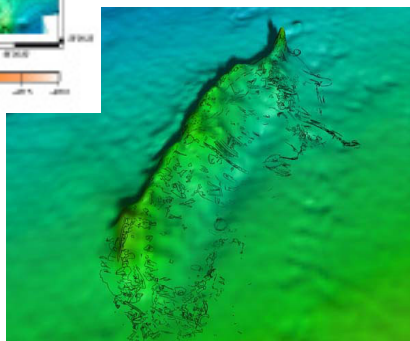
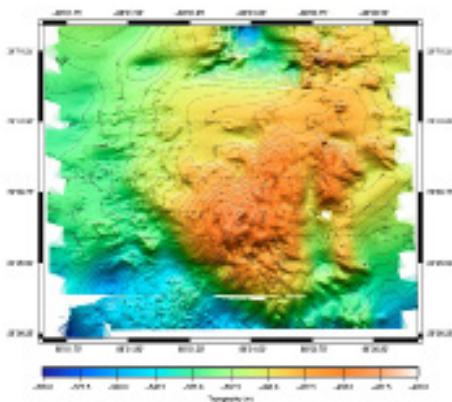




## R/V MISS EMMA MCCALL

The Miss Emma McCall is a multi-purpose vessel well suited for a wide variety of oceanographic research duties. The Miss Emma McCall operated by TDI-Brooks on a longterm charter available for projects throughout North and South America.

TDI-Brooks International specializes in conducting offshore surface geochemical exploration (SGE) and heat flow programs for the worlds leading petroleum producers, and has a large collection of SGE and heat flow program data from around the world available for sale. TDI-Brooks also has extensive experience in conducting offshore geotechnical coring/engineering programs, environmental assessments, metocean, site surveys and seabed surveys.



Geotechnical Coring and Measurements with:

- Box Core
- Piston Core (3")
- Jumbo Piston Core (4")
- Vibracore
- Cone Penetrometer
- Coring for Surface Geochemical Exploration (SGE)
- Surface Heatflow Measurements
- Marine Environmental Baseline Surveys (EBS)
  - Marine Geophysical Surveys for:
    - Seep Hunting / SGE Programs
    - 2DHR Seismic pre-drill shallow gas hazards
    - Platform and Pipeline Installation
    - Dredging
    - Fiber Optic Cable Route Installations
    - Offshore Wind Farm Installations
    - Academic Research

Our field services are supplemented by high quality environmental and geotechnical laboratories with a staff of nearly one-hundred individuals including fourteen Ph.D. level oceanographers, geochemists, biologists and geologists.

# R/V MISS EMMA MCCALL VESSEL SPECIFICATIONS

## General

Name	R/V Miss Emma McCall
Built	2003
Port/Flag	Fourchon, TX - USA
MMSI No.	338100000
Call Sign	WDG8742
IMO No	9289659

## Dimensions

Dimensions (open deck)	95' x 30' (L x W)
Length (overall)	153'
Depth	12'
Deck Cargo	500'
Maximum Speed	11 knots
Economical Speed	8 knots

## Accommodations

Cabins/Berths	9 staterooms (7x 2-man, 2x 6-man)
Toilets	5 complete heads
Showers	4 showers
Moon Pool	2x 4x4 moon pools, one with 24" valve
Survey Lab	Survey lab with seperate power transmitter
Intercom	Video monitor & intercom system throughout

## Capacities

Water	8,900 gal (apx)
Fuel	45,000 gal (apx)
Potable Water	5,400 gal (apx)
Ballast Water	80,000 gal (apx)
Lube Oil	1,300 gal (apx)
Hydraulic Oil	400 gal (apx)
Liquid Mud	50,400 gal (apx-can be converted to fuel or water)

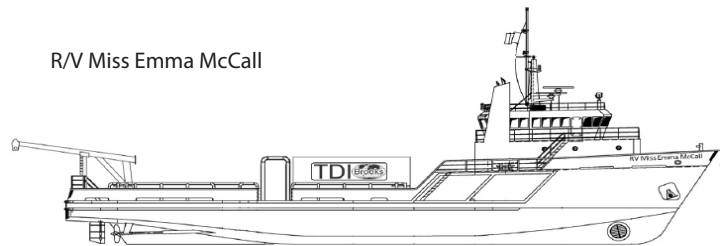
## Machinery

Main engines	2x CAT 3508TA w/twin disk MG6690-OOSC 3.21 ratio
Generators	2x 175kw CAT 3306T @440
Bowthruster	CAT 3406, MARPROP 300hp tunnel

Rev\_031721

The Miss Emma McCall is equipped with satellite communications (voice, fax, and email), differential GPS, geophysical survey gear and large a-frames with high-speed winches for coring or geotechnical work.

R/V Miss Emma McCall



**TDI-Brooks International, Inc.**

14391 South Dowling Road.  
College Station, TX 77845 - USA  
Telephone: +1 979 693 3446  
email: [info@tdi-bi.com](mailto:info@tdi-bi.com)  
[www.tdi-bi.com](http://www.tdi-bi.com)



TDI-Brooks is a privately held Texas firm incorporated in 1996 and headquartered in College Station, with a remote domestic office located in Houston, TX and strategically placed offices around the globe. The company has international affiliates in Port Harcourt, Nigeria (TDI-Brooks Nigeria Ltd.) and Rio de Janeiro, Brazil (GSI-Brooks) with branch offices in Colombia (TDI-Brooks Sucursal Colombia) and Mexico.