



GYRE

WHO WE ARE

TDI-Brooks has over 25 years of vessel chartering and management experience with the R/V GYRE available for projects in Mexico, Northern South America (NSA), North / West Africa and the Mediterranean.

The Gyre is outfitted with a Kongsberg EM 302/304 multibeam (MBES) echosounder capable of high resolution seabed mapping from 10 meters to more than 8,000 meters. The Gyre has executed numerous offshore Surface Geochemical "Seep Hunting" Exploration (SGE) and Heat Flow programs for the world's leading petroleum producers.

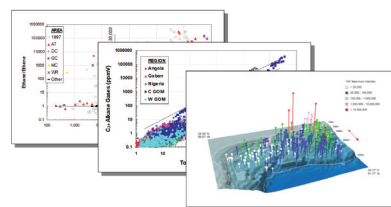
The Gyre is also capable of performing deepwater geotechnical coring including 20 meter Jumbo Piston cores (JPC), 40 meter CPT-Stinger acquisition. Other capabilities include environmental assessments, metocean, heat flow and environmental baseline studies (EBS).



WHAT WE PROVIDE

This vessel is well suited for the following applications:

- Seabed Geochemical "Seep-Hunting" (SGE)
- Seabed Heat Flow Surveys (HF)
- Seabed Geotechnical Coring and Measurements
- 2DHR Seismic Multi Channel Geophysical Site Surveys
- Pipeline Damage Assessments and Inspection
- Offshore Cable Route Surveys



Comprehensive analysis and reporting

Our field services are supplemented by high quality environmental, geochemical and geotechnical laboratories with a staff of nearly one-hundred individuals including fourteen Ph.D. level oceanographers, geochemists, biologists and geologists.

CONTACT US

TDI-Brooks
14391 S Dowling Road
College Station TX 77845
USA

Phone : +1 (979) 693-3446
Email : info@tdi-bi.com
Web : www.tdi-bi.com

GYRE VESSEL SPECIFICATIONS

rev 07/28/2021

The TDI-Brooks fleet is operated within a robust Safety Management System and all vessels are regularly vetted by client marine assurance groups and a part of the OCIMF Offshore Vessel Inspection Database (OVID).

General

Name	R/V Gyre
Owner	TDI-Brooks International, Inc.
Built	Halter Marine 01 Oct 1973, 01 Jan 1984
Port/Flag	Vanuatu, Port Vila
MMSI No.	577275000
Call Sign	YJYX5
IMO No	7318999
Classification	ABS A1, AMS, Ice Class C; Intl. Load Line
Statutory Certifications by	Isthmus Bureau of Shipping
SOLAS/MARPOL Classification	Research Vessel, Cargo ship under 500 tons

Dimensions

Dimensions (open deck)	181m ²
Dimensions (covered deck)	12' x 24' x 9' (LxWxH)
Length Overall	54.7m
Molded Breadth	10.97m
Depth to Main Deck (Molded)	4.57m
Max Speed	10 knots
Economical Speed	8 knots
Regulatory Tonnage	291GRTM
Deadweight Tonnage	436DWT (actual number TBD after drydock)
Max Draft	3.5m
Minimum Operational WD	5m (1m deep gondola protrusion)

Machinery

Main Engines	(2) – Cat D-398
Max Continuous Power	(2) x 634.1 kW each
Rated Power	2 x 300 KVA each, 440 V, 3 phase, 60 Hz, can parallel output
Generators	(2) – Cat 379B
Standby Emergency Generator	Hotel generator 60KVA
Type II MSD	Headhunter Type II, TW-200B
Bilge Oil Water Separator	Ecologix Environmental Systems, BORST-5T107, OMD-21 detector- 5 GPM
Fuel Purifier/Centrifuge	Alpha Laval

Deck Machinery

A-frames	2 articulating, one stbd, one on stern
Crane	Nautilus Knuckle boom, 5000 # SWL 35 ft reach

Capacities

Fuel	348 m3
Potable Water	82 m3
RO Watermaker	4.2 m3/day
FW Ballast	518 m3
Lube Oil	5.7 m3
Hydraulic Oil	5.7 m3
Slop Tank	5.7 m3
Used Oil	5.7 m3

Voice/Data Communications

Primary Data	Bandwidth 128k down/64k to 10Mb down/3Mb up
Internet/Email	Custom access allowed ranging from Free to \$7250/mth, or \$/MB
Sat Comm	KVH V7hts / Inmarsat Fleet Broadband Systems

Life Saving Equipment

Type 1 PFD	200% of POB
Immersion Suits	100% of POB
Life Rafts	6 – 20 person each; 3 per side
SOLAS Rescue Boat and davit	Zodiac Hurricane RHIB, w/25 hp OBM

Accommodations

Total Berthing (in)	35 - 9 marine crew, 26 supernumeraries
One person rooms	One
Two person rooms	Eight
Four person rooms	Three
Six person rooms	One
Heads/Shower	3 ensuite for 14 persons; 4 shared public
Galley/Mess Seating	9 per seating
Laundry	Two with 2 washers/dryers each
Lounge	One
Shop/Tool Room	One, main deck aft
Labs/Enclosed Work Spaces	Four, 2 main deck, 2 foc'sle deck aft

SCIENTIFIC SERVICES ON A GLOBAL BASIS

TDI-Brooks is a scientific data acquisition services company specializing in multi-disciplinary oceanographic projects covering; offshore geotechnical field services, environmental baseline surveys, seabed geochemical “seep hunting” and heat flow for oil and gas exploration, offshore geophysical surveys for oil & gas, wind farm, metocean, seabed mining, dredging, LNG, and multi-disciplinary oceanographic and high-end environmental chemistry, renewables and marine research.

TDI-Brooks has over 25 years of vessel chartering and management experience and currently operates four research vessels, R/V Gyre, R/V Proteus, R/V Miss Emma McCall and R/V Brooks McCall.