

OFFSHORE WIND

WHO WE ARE

TDI-Brooks acquires, processes and interprets geological, geophysical and geotechnical data to assist in assessing the suitability of offshore sites for wind farms and their infrastructure.

We have extensive experience providing detailed analyses of the seabed and accurate assessments of subsurface conditions for offshore wind farm sites.

WHAT WE DO

- Site Assessment Surveys
- Seabed & Soil Sediment Analysis
- Foundation Site Installation Surveys
- Cable Route Selection Surveys
- Environmental Sampling & Testing
- Metocean Wave & Tidal Analysis
- UXO Mitigation
- Geotechnical, Analytical & Environmental Laboratories



TDI-Brooks helps plan the construction of commercial scale wind farms requiring the knowledge the geologic makeup and condition of the seafloor. Each of these items are critical to plan the type of foundation for the turbines, the magnitude of ground disturbance and geoengineering that will be required to set that foundation, the presence of hazards to the construction/maintenance activities and the specific layout of the field.

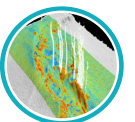
OUR SERVICE LINES



GEOPHYSICAL SURVEY SERVICES



SEABED GEOTECHNICAL SURVEYS



SEABED GEOCHEMICAL "SEEP-HUNTING"



ENVIRONMENTAL BASELINE SURVEYS

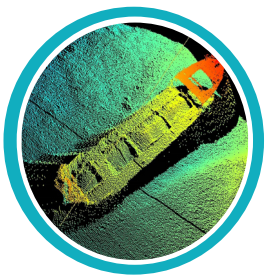
CONTACT US

TDI-Brooks
14391 S Dowling Road
College Station TX 77845
USA

Phone : +1 (979) 693-3446
Email : info@tdi-bi.com
Web : www.tdi-bi.com

OFFSHORE WIND

rev 06/18/2021



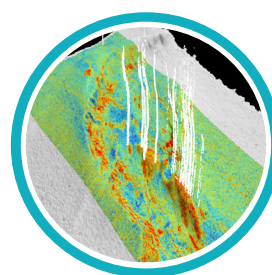
GEOPHYSICAL

- Geophysical site investigations
- Hydrographic mapping of seafloor
- Platform & pipeline damage
- Pipeline & cable route selection surveys
- Permitting with BOEM
- Seismic interpretation of subsurface structure and stratigraphy.
- Processing of data for hazards assessment
- Archaeological survey planning
- Unexploded ordinance surveys (UXO)



GEOTECHNICAL

- Geotechnical site surveys
- Soil sampling including piston cores, box cores, grab samples, push cores, and vibracores
- CPT soundings
- Foundation analysis surveys
- Permitting with BOEM
- Geotechnical laboratory analysis
- Comprehensive interpretation and reporting



GEOCHEMICAL

- Seabed Geochemical "seep-hunting"
- Multibeam core site selection
- Piston core acquisition
- Seabed heat flow measurements
- Geochemical on-site laboratory
- Geochemical data processing and interpretation
- Global geochemical database for future exploration work
- Global geochemical experts



ENVIRONMENTAL

- Environmental baseline studies
- Environmental site assessment & investigation
- Environmental sampling & testing
- Marine biological and ecological assessment and reporting
- Benthic habitat data collection
- Site remediation
- Metocean, wave & tidal analysis
- Marine weather forecasting
- Analytical & environmental laboratories

QUICK FACT

Since 1996, TDI-Brooks has collected over 50,000 deep water piston core sediment samples and heat flow soundings for every major oil company, in areas such as the Caribbean, the Gulf of Mexico (USA and Mexico), the Mediterranean, the North Atlantic, and offshore Brazil and West Africa.

SCIENTIFIC SERVICES ON A GLOBAL BASIS

TDI-Brooks is a scientific data acquisition services company specializing in multi-disciplinary oceanographic projects covering; offshore geotechnical field services, environmental baseline surveys, seabed geochemical "seep hunting" and heat flow for oil and gas exploration, offshore geophysical surveys for oil & gas, wind farm, metocean, seabed mining, dredging, LNG, and multi-disciplinary oceanographic and high-end environmental chemistry, renewables and marine research.

TDI-Brooks has over 25 years of vessel chartering and management experience and currently operates four research vessels, R/V Gyre, R/V Proteus, R/V Miss Emma McCall and R/V Brooks McCall.